

# English

This term, pupils will explore diverse fiction, non-fiction, and poetry to enhance reading comprehension, vocabulary, and inference skills.

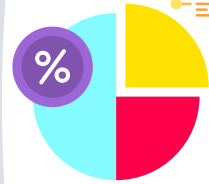
They'll craft descriptive narratives, persuasive texts, and poetry while refining editing techniques.

SPaG lessons will focus on advanced punctuation, grammar, and spelling to ensure accuracy and fluency in writing.



# Maths

Blocks:  
Fractions, Decimals & Percentages  
Converting Units  
Algebra  
Ratio and Proportion  
Shape and Space  
Area, Perimeter and Volume



Daily KS2 Arithmetic Practice  
Weekly Number Fact Fluency Practice

# RE

Branch 3: Galilee to Jerusalem

Pupils explore Jesus' ministry as the Messiah, focusing on His signs and miracles, particularly the seven signs in John's Gospel. They learn about the Sacraments of Reconciliation and the Anointing of the Sick, the roles of clergy, and the New Law through the Beatitudes and the Our Father. Key events include the Magi, the Feeding of the Five Thousand and Zacchaeus, with links to service and care for others.

Branch 4: Desert to Garden

Pupils study the journey from Lent to Easter, including Holy Week and the Paschal Triduum. They reflect on forgiveness, reconciliation and new life through the Resurrection, using key symbols of Easter. Links are made to Catholic Social Teaching, especially Participation and caring for the community.



# Geography

## Locational Knowledge:

The North and South Poles- The Impact of Climate Change

- Significant people: Ernest Shackleton & Matthew Henson
- Identify the position and significance of latitude, longitude, Equator, Northern Hemisphere, Southern Hemisphere, the Tropics of Cancer and Capricorn, Arctic and Antarctic Circle, the Prime/Greenwich Meridian and time zones (including day and night)
- Causes of climate change
- Impact of climate change at the North and South Pole



# Y6 Curriculum Map Spring 2026

Miss Logue  
Mrs Straczek

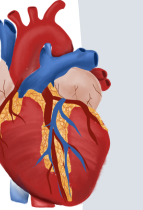
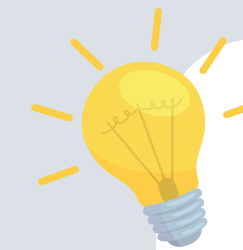
# Science

Physics:  
Electricity & Light

Sustainability:  
Renewable Energy  
Light Pollution

Biology:  
The Circulatory System  
Diet & Lifestyle

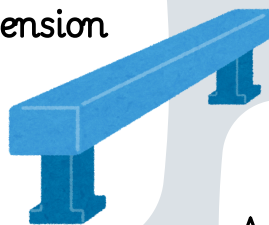
British Science Week:  
6th - 15th March



# PE

Gymnastics  
Counter-balance & counter tension  
Flight

Invasion Games  
Football



# Music

Weekly hymn-singing practice  
A New Year Carol (Benjamin Britten)  
You've Got a Friend (Carole King)



# Computing

We Are Physical  
Programmers

Topic - Tinkering  
Hardware - Micro:bits



# PSHCE



Children will deepen their understanding of Catholic Social Teaching. They will look closer at their own gifts and talents and how these can be used to impact the lives of others. Children will also gain a better understanding of the changes to their bodies during puberty.

# Art & DT

Filming our cross-curricular art/DT/computing stop-motion animation project, based on the following paintings: 'The Washerwomen', 'Coming from the Mill', 'Sunday on La Grande Jatte', 'The Card Players' & 'Children at Play on the Beach'.

Electrical Systems: Steady Hand Game

